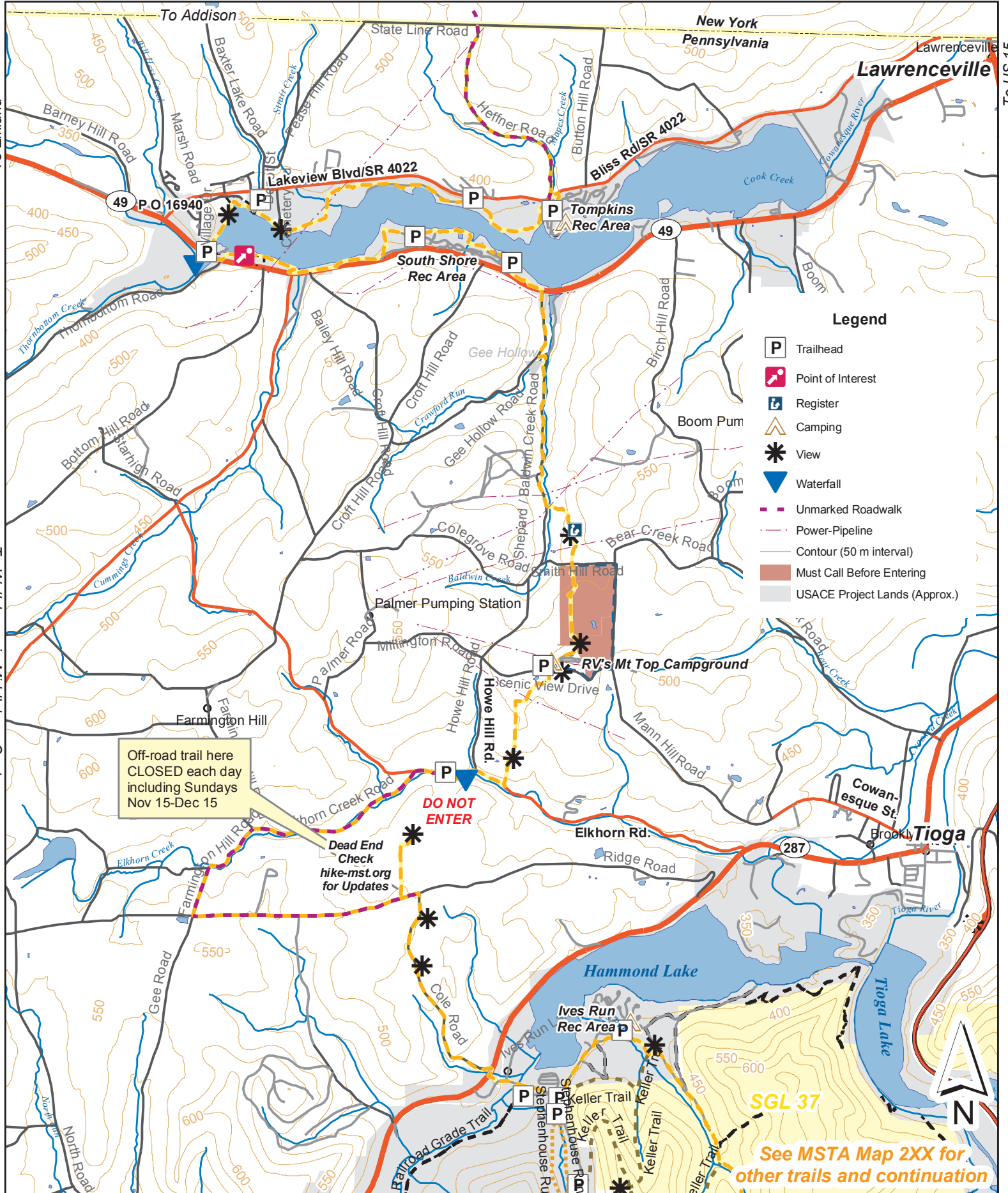


Mid State Trail: Hammond Lake to NY Border

A part of the Great Eastern Trail

Temporary Map, September 2008



Off-road trail here
CLOSED each day
including Sundays
Nov 15-Dec 15

DO NOT ENTER

Dead End Check
hike-mst.org
for Updates

- ### Legend
- P Trailhead
 - * Point of Interest
 - R Register
 - C Camping
 - * View
 - ▲ Waterfall
 - Unmarked Roadwalk
 - Power-Pipeline
 - Contour (50 m interval)
 - Must Call Before Entering
 - USACE Project Lands (Approx.)

SGL 37

See MSTA Map 2XX for
other trails and continuation